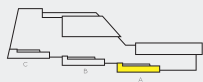


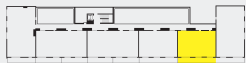
OBJEKT

A.



POSCHODIE

4.



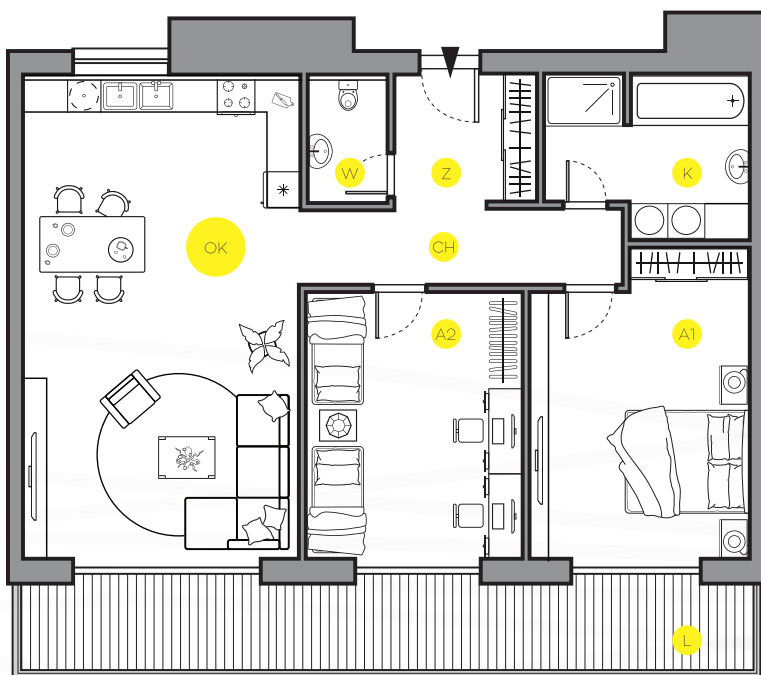
# 3A.45

PRIESTRANNÝ TROJIZBOVÝ BYT  
S KOBKOU PŘIAMO NA POSCHODÍ

CELKOVÁ PLOCHA  
**108,63 m<sup>2</sup>**

PLOCHA BYTU  
**87,74 m<sup>2</sup>**

PLOCHA LOGGIE  
**17,87 m<sup>2</sup>**



Z	ZÁDVERIE	4,80 m <sup>2</sup>
CH	CHODBA	7,33 m <sup>2</sup>
OK	OBÝV. + KUCH.	33,97 m <sup>2</sup>
A1	IZBA 1	16,60 m <sup>2</sup>
A2	IZBA 2	14,71 m <sup>2</sup>
W	WC	2,42 m <sup>2</sup>
K	KÚPEĽŇA	7,91 m <sup>2</sup>
L	LOGGIA	17,87 m <sup>2</sup>
~	KOBKA	3,02 m <sup>2</sup>

